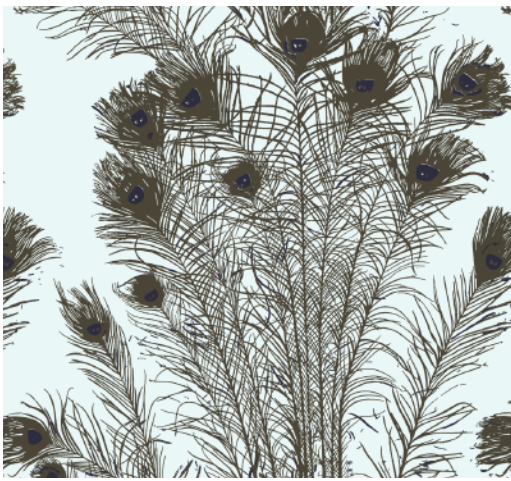


# Plume 'Peacock Feathers' Mint Wallpaper by Florence Broadhurst

Curated by Collette Dinnigan as part of the Plume Collection, Florence Broadhurst's **Peacock Feathers in Mint** is a statement design that exudes timeless elegance.

The intricate hand-drawn feathers, rendered in an antique golden hue, create a striking contrast against the refreshing mint background, while the deep blue-purple "eye" of the feathers adds depth and intrigue.

Perfect for both residential and commercial interiors, this wallpaper enhances bedrooms, dining areas, and statement walls, bringing a sense of refined glamour. In boutique hotels, luxury retail spaces, and high-end offices, its rhythmic pattern adds sophistication and visual interest, complementing both modern and classic aesthetics. A true celebration of Broadhurst's bold artistic legacy, Peacock Feathers in Mint is a design that transforms any space with its distinctive charm.



'Peacock Feathers' - Mint



'Peacock Feathers' - Mint



'Peacock Feathers' - Insitu

## Sustainability

Made to order within 5-7 days using the latest eco-friendly printing tech. That means no over-production and waste like regular wallpaper brands.

Our PVC Free wallpaper base is sourced from sustainably managed forests.

We print all wallpapers using odorless water-based ink. GREENGUARD GOLD Certified to standards for low chemical emissions into indoor air. AMoD's wallpapers are of the highest quality, are environmentally friendly, and totally 100% vinyl-free.

ROLL DIMENSIONS	24" (61.5cm) x 33ft (10.05m)
PATTERN REPEAT	16.5" (42cm)
PATTERN MATCH	Straight Match
FINISH	Pre-trimmed Butt Join
CLEANABILITY	Washable
USAGE	Domestic & Commercial
PRODUCT CODE	AMOD105

GENERAL ENQUIRIES,  
ORDER & PRODUCTS

+61 02 9979 3100  
Mon-Fri: 8am - 5pm

[wallpaper@australianmuseumdesign.com.au](mailto:wallpaper@australianmuseumdesign.com.au)  
[www.australianmuseumdesign.com.au](http://www.australianmuseumdesign.com.au)



# Non-woven Wallpaper

## CERTIFICATIONS

**This wallpaper has obtained the following Fire and Flammability classifications.**

### North America

“Class A” for ASTM Designation E84-15a. Comparable to UL 723, ANSI/NFPA No. 255 & UBC No. 8-1.

### Building Codes Cited:

National Fire Protection Association, ANSI/NFPA No. 101, “Life Safety Code”. International Building Code, Chapter 8, Interior Finishes, Section 803.

### Australia & New Zealand

“Group 1” for AS/NZS Standards: AS/NZS 3837:1998 The Building Code of Australia (BCA)

## BATCHING & DELIVERY

**Note:** Samples of this wallpaper are provided for review of the material, pattern scale and print technique – they are not intended to be used for colour matching purposes. There can be slight shifts in colour between runs, so your wallpaper may vary slightly from sample colouring.

Please ensure that you order the correct amount as we do not guarantee that rolls printed in different batches will be an exact match.

All AMoD orders are printed and shipped without additional charge to a single destination in Australia.

## ADDITIONAL INFO

### Non-woven wallpaper advantages

**The most user-friendly wallpaper on the market.**

Sourced from FSC Certified Forests and printed with water-based ink.

Non-wovens are earth friendly, and totally 100% vinyl-free. Fire rated – AMoD wallpaper is a Class A Group 1

Fire rating. Meaning they are ideal for both commercial and domestic applications.

Breathable – Non woven wallpapers are breathable, helping them endure mould and mildew conditions. Thus, perfect to decorate bathrooms, kitchens and laundries.

Paste-The-Wall – Made from both natural and non-porous synthetic fibres. These wallpapers will not absorb moisture from the adhesive. Simply apply the paste directly to the wall. The paper will not expand or contract with no booking time required.

Butt Join – Also known as a butted seam. The wallpaper rolls are finished precisely to have no overlap. Meaning the panels simply butt up to each other for ease of installation.

Cleanable – Dirt, dust and other marks can be simply cleaned using a damp cloth with soapy water.

Durable – The AMoD designer wallpapers are also heard wearing and tear-resistant. This is a great advantage as the wallpapers will not get torn during installation or removal.

Easy to Remove – Once completely dry, non-woven wallpapers will come off easily. It should come down in full sheets with no need for the dreaded steamer or water without causing any damage to the walls upon their removal

Roll Size – 61.5cm wide x 10m long. Our rolls are the equivalent to a US double roll providing 6 square metres per roll.

GENERAL ENQUIRIES,  
ORDER & PRODUCTS

+61 02 9979 3100  
Mon-Fri: 8am - 5pm

[wallpaper@australianmuseumdesign.com.au](mailto:wallpaper@australianmuseumdesign.com.au)  
[www.australianmuseumdesign.com.au](http://www.australianmuseumdesign.com.au)

