

Fairy Love Hearts

Wallpaper by Margaret Clark





About the Artist

Margaret Clark (1884–1950) was one of Australia's earliest and most imaginative illustrators of fairies, flora and storytelling scenes. Drawing inspiration from the bushland she knew as a child, her work celebrated the gentle beauty of Australian native plants, animals, and the quiet magic of nature.

Working at a time when most fairy art followed European traditions, Margaret's illustrations stood apart - bringing a uniquely Australian sensibility to the genre. Her compositions often featured gum-blossom wings, fireflies, and native flowers with a level of charm and detail that positioned her work as both playful and timeless.

Originally trained as a commercial artist, Margaret produced illustrations for children's books, stationery, and fabric design in the early 1900s. While she remained largely unknown to mainstream audiences, her work was quietly treasured by those who discovered it. With the Federation Fairies collection, her vision is now being restored and shared with a new generation.

About the Australian Museum of Design

The Australian Museum of Design (AMoD) is a cultural initiative founded to preserve, honour and revitalise Australia's design legacy, and to share it with the world. At its heart is a growing archive of more than 10,500 hand-drawn surface designs created by Australian artists across the 20th century, many of which have never been seen publicly until now.

AMoD exists to make this rich history accessible for study and for everyday use. From wallpaper and textiles to digital licensing and design exhibitions, we bring historical designs into modern homes, commercial interiors and creative projects. Each work is carefully digitised and restored, ensuring the artist's original intent and craft are respected while enabling new forms of expression and appreciation.

Our purpose goes beyond preservation. We are building a bridge between generations, where the imagination, skill and stories of Australian artists are no longer confined to archives, but reintroduced as part of a living, design-led conversation. Through collaborations, education and commercial partnerships, AMoD supports both the cultural and economic value of Australian design, championing creators past and present.

Whether it's through curated wallpaper collections, designer features, or licensing support for brands and makers, AMoD is helping to define a new chapter in the story of Australian visual identity that honours the past while creating opportunities for the future.

GENERAL ENQUIRIES, ORDER & PRODUCTS

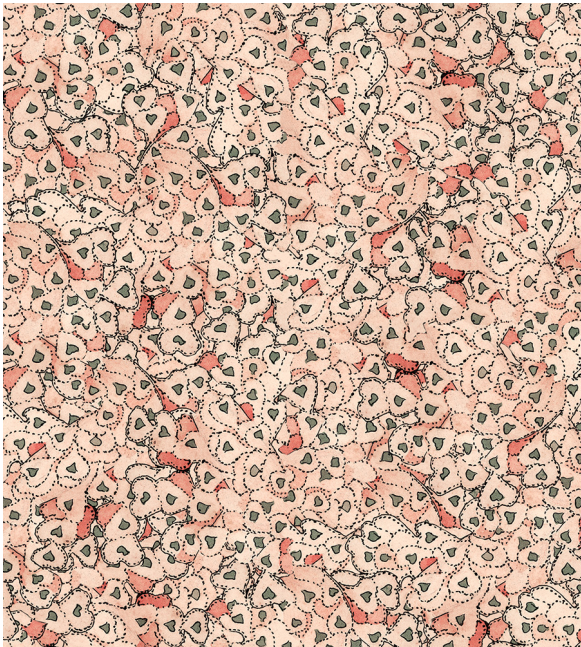
+61 02 9979 3100

Mon-Fri: 8am - 5pm

wallpaper@australianmuseumdesign.com.au

www.australianmuseumdesign.com.au

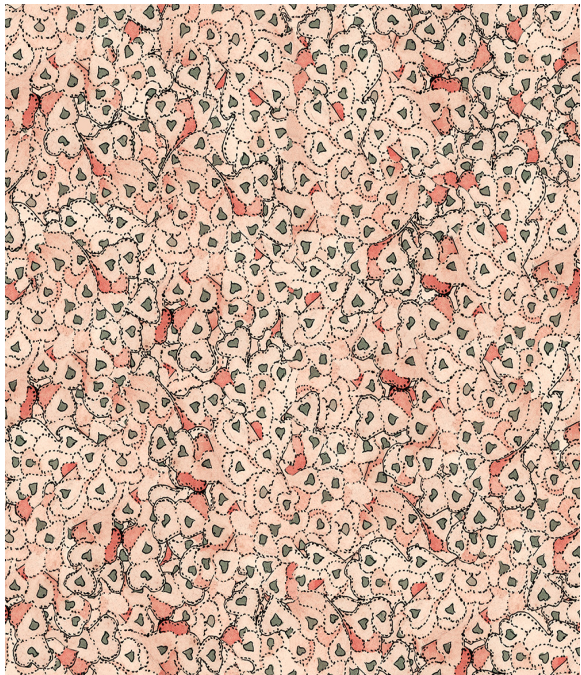




Complete Motif



Insitu



Love Heart Fairies

Wallpaper by Margaret Clark

Fairy Love Heart is a delicate and expressive wallpaper design by Margaret Clark, hand-drawn in 1918 and reissued as part of the Australian Museum of Design's Federation Fairies collection. The artwork features gentle fairy couples framed within looping heart-shaped garlands of native Australian blossoms, each moment rendered with warmth and quiet charm. The soft spacing and flowing composition create a light, romantic rhythm across the surface.

Margaret Clark was known for her ability to blend character, emotion, and botanical detail — and Fairy Love Heart is one of her most tender works. It reflects a unique period in Australian illustration, when early fairy art drew not from European forests but from local flora and a distinctly gentle sense of storytelling.

Originally created for decorative use in children's illustration and domestic textiles, the design is now faithfully reprinted for interiors on non-woven paper or matte vinyl. Fairy Love Heart is ideal for bedrooms, nurseries, reading spaces, or anywhere a touch of softness and sentimental beauty is welcome. It brings with it not only timeless charm, but a piece of early Australian design history — heartfelt and enduring.

ROLL DIMENSIONS	24" (61.5cm) x 33ft (10.05m)
PATTERN REPEAT	Varies with Design
PATTERN MATCH FINISH	Pre-trimmed, Butt Join
CLEANABILITY	Washable
USAGE	Domestic & Commercial
PRODUCT CODE	AMOD101

Sustainability

Made to order within 5-7 days using the latest eco-friendly printing tech. That means no over-production and waste like regular wallpaper brands.

Our PVC Free wallpaper base is sourced from sustainably managed forests.

We print all wallpapers using odorless water-based ink. GREENGUARD GOLD Certified to standards for low chemical emissions into indoor air. AMoD's wallpapers are of the highest quality, are environmentally friendly, and totally 100% vinyl-free.

GENERAL ENQUIRIES, ORDER & PRODUCTS

+61 02 9979 3100
 Mon-Fri: 8am - 5pm
wallpaper@australianmuseumdesign.com.au
www.australianmuseumdesign.com.au



Non-woven Wallpaper

The Advantages of Non-Woven Wallpaper

At AMoD, we use premium non-woven wallpaper for all our designs, combining durability, ease of use, and environmental responsibility.

Eco-Conscious & Certified

Our non-woven wallpapers are made from a blend of natural and synthetic fibres sourced from FSC Certified Forests. They are printed using water-based inks and contain no vinyl, making them 100% earth-friendly and a safe, sustainable option for any space.

Fire Rated for Safety

All AMoD wallpapers are rated Class A / Group 1, which is the highest standard for fire safety in both commercial and residential applications. This makes them a trusted choice for homes, offices, retail spaces, and other interiors where compliance is key.

Breathable to Reduce Mould & Mildew

Thanks to the breathable nature of non-woven materials, moisture doesn't get trapped behind the wallpaper. This helps reduce the risk of mould and mildew, making AMoD wallpapers particularly suitable for bathrooms, kitchens, laundries, or any humid environment.

Paste-the-Wall Simplicity

Installation is straightforward and mess-free. With non-woven wallpaper, there's no need to soak the paper. Simply apply paste directly to the wall.

Because the fibres are non-porous, they won't absorb moisture from the adhesive, meaning, no expansion or shrinkage. Panels hang true and flat, speeding up the installation process.

Precision-Cut Butt Joints

AMoD wallpaper rolls are manufactured with butted seams, meaning there is no overlap. Panels are trimmed perfectly to allow for a clean edge-to-edge alignment, ensuring a seamless visual result and easier installation for professionals and DIY users alike.

Cleanable Finish

The surface is lightly washable, allowing dirt, dust and most everyday marks to be wiped off using a damp cloth and mild soapy water. It's perfect for spaces where design needs to meet practicality.

Durable & Tear-Resistant

Non-woven wallpaper is exceptionally strong and stable, both during and after installation.

It won't tear when pasted, moved, or smoothed into place and resists damage when removing or repositioning panels. This strength is particularly helpful when aligning detailed or large-scale designs.

Easy to Remove Without Damage

When you're ready for a change, AMoD wallpapers can be peeled off cleanly in full sheets — no steaming, no scraping, and no damage to your walls. This makes non-woven wallpaper ideal for renters, renovators, and designers who value both beauty and flexibility.

Roll Dimensions

Each wallpaper roll is 61.5 cm wide x 10 metres long, covering 6 square metres per roll. This sizing is equivalent to a standard US double roll, making it compatible with most industry calculators and installation guides.

CERTIFICATIONS

This wallpaper has obtained the following Fire and Flammability classifications.

North America

"Class A" for ASTM Designation E84-15a. Comparable to UL 723, ANSI/NFPA No. 255 & UBC No. 8-1.

Building Codes Cited:

National Fire Protection Association, ANSI/NFPA No. 101, "Life Safety Code". International Building Code, Chapter 8, Interior Finishes, Section 803.

Australia & New Zealand

"Group 1" for AS/NZS Standards: AS/NZS 3837:1998 The Building Code of Australia (BCA)

BATCHING & DELIVERY

Note: Samples of this wallpaper are provided for review of the material, pattern scale and print technique — they are not intended to be used for colour matching purposes. There can be slight shifts in colour between runs, so your wallpaper may vary slightly from sample colouring.

Please ensure that you order the correct amount as we do not guarantee that rolls printed in different batches will be an exact match.

All AMoD orders are printed and shipped without additional charge to a single destination in Australia.