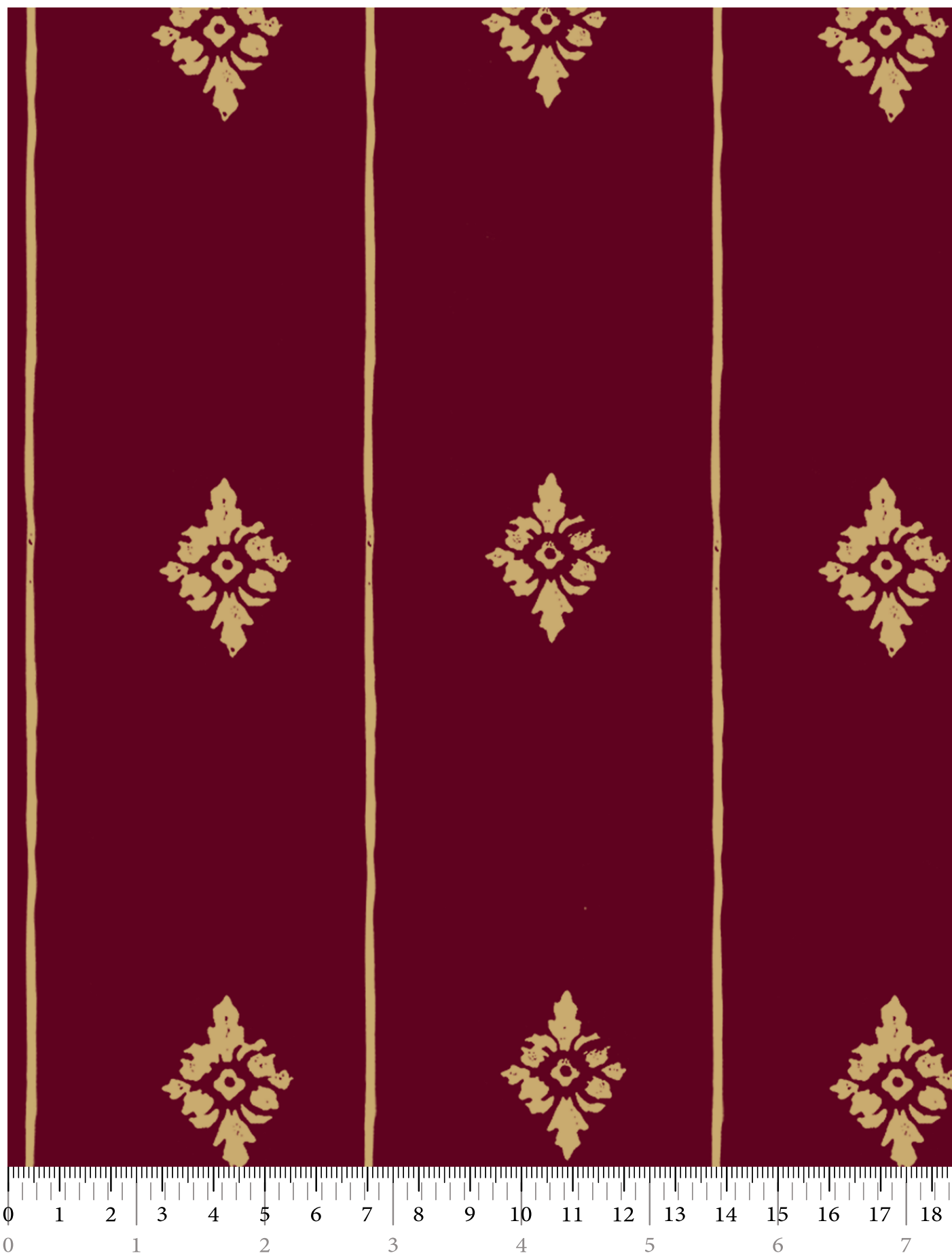


'Fleur Diamont' Bordeaux

Wallpaper from Florence Broadhurst





About the Artist

Collette Dinnigan is one of Australia's most iconic and internationally recognised designers, known for her refined sense of style, historical awareness, and timeless design language. Beginning in fashion, she became the first Australian to launch a ready-to-wear collection in Paris, with her work celebrated for its romance, detail, and craftsmanship.

Her passion for considered interiors evolved naturally from a lifelong dedication to beauty and form. With a keen eye for pattern, proportion, and narrative, Collette has brought her distinctive sensibility to homes, boutique hotels, and heritage restorations across Australia and abroad.

This exclusive collaboration with the Australian Museum of Design continues that vision—translating classic European motifs into contemporary design pieces. Her curated collection, rich in historical reference and quiet elegance, reflects a designer whose work continues to shape and inspire Australian design culture across disciplines.

About the Australian Museum of Design

The Australian Museum of Design (AMoD) is a cultural initiative founded to preserve, honour and revitalise Australia's design legacy, and to share it with the world. At its heart is a growing archive of more than 10,500 hand-drawn surface designs created by Australian artists across the 20th century, many of which have never been seen publicly until now.

AMoD exists to make this rich history accessible for study and for everyday use. From wallpaper and textiles to digital licensing and design exhibitions, we bring historical designs into modern homes, commercial interiors and creative projects. Each work is carefully digitised and restored, ensuring the artist's original intent and craft are respected while enabling new forms of expression and appreciation.

Our purpose goes beyond preservation. We are building a bridge between generations, where the imagination, skill and stories of Australian artists are no longer confined to archives, but reintroduced as part of a living, design-led conversation. Through collaborations, education and commercial partnerships, AMoD supports both the cultural and economic value of Australian design, championing creators past and present.

Whether it's through curated wallpaper collections, designer features, or licensing support for brands and makers, AMoD is helping to define a new chapter in the story of Australian visual identity that honours the past while creating opportunities for the future.

GENERAL ENQUIRIES, ORDER & PRODUCTS

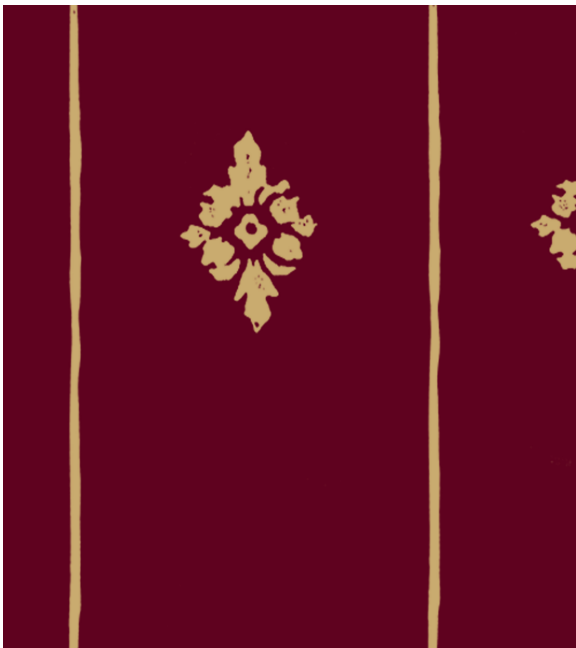
+61 02 9979 3100

Mon-Fri: 8am - 5pm

wallpaper@australianmuseumdesign.com.au

www.australianmuseumdesign.com.au





Complete Motif



Insitu



'Fluer Diamont' Bordeaux Wallpaper from Collette Dinnigan

Napoleon Fleur Diamont – Bordeaux is a structured and elegant wallpaper design curated by Collette Dinnigan for the Australian Museum of Design. Referencing the royal symbolism of the Fleur de Lys, the repeating diamond motif and vertical lines echo classical French design, while the deep Bordeaux colourway brings richness and warmth.

The design draws from Napoleon's use of regal emblems to express identity and authority during the Empire era, reimagined here with a soft, painterly touch and hand-drawn lines. This version pairs a dark wine-red ground with warm golden patterning, creating a bold but refined effect — ideal for interiors seeking mood and heritage.

Its strength lies in its balance: the linear composition adds structure to a room, while the gentle irregularity of the hand-drawn marks lends it depth and softness. The design feels storied but not static — historically informed, yet versatile enough for contemporary use.

Perfect for libraries, drawing rooms, intimate restaurants or entrances that need impact without excess, Napoleon Fleur Diamont – Bordeaux is timeless, confident, and exclusive to the Australian Museum of Design.

Substrates

Choose from three options: non-woven paper, a durable vinyl with a smooth matte finish, or our most exclusive option: a special edition printed substrate base, featuring antique gold applied by rotary screen printing. This traditional technique layers colour with precision and depth, creating a finish that shimmers subtly in changing light and brings a sense of craftsmanship rarely seen in modern production.

Features & Installation

Shared Features across all substrates

Width: 134cm (double standard wallpaper width)

Pattern Repeat: Varies by design

Fire Rating: AS/NZS 3837, Group 1 (flame retardant)

Application: Suitable for residential and commercial interiors

Printing: On demand 10-14 days

Installation: Special instructions recommended

GENERAL ENQUIRIES, ORDER & PRODUCTS

+61 02 9979 3100

Mon-Fri: 8am - 5pm

wallpaper@australianmuseumdesign.com.au

www.australianmuseumdesign.com.au



SUBSTRATE & PRINT OPTIONS

The Australian Museum of Design offers a curated collection of wallpapers created from the AMoD Design Archive and exclusive artist partnerships. All designs are printed to order using professional-grade materials, certified substrates, and established production methods. This specification sheet outlines the shared features across the range, the available substrate and printing options, fire safety certifications, and key ordering and installation considerations to assist with your interior project.

PRODUCTS

Non-Woven Wallpaper

- Breathable and PVC-free, ideal for most residential and commercial settings.
- Paste-the-wall application.
- Tear-resistant, washable and stable.
- Printed digitally using high-resolution pigment inks.

Matte Vinyl Wallpaper

- Smooth finish, scuff-resistant, and suitable for high-traffic areas such as hallways, cafes or hotels.
- Durable and wipeable.
- Printed digitally with rich colour depth and surface precision.

Special Edition: Rotory Screen Foil

- Features a bespoke combination of metallic foil or matte base and an antique gold glaze applied via rotory screen printing.
- Offers exquisite texture, reflective qualities, and a traditional artisan finish.

CERTIFICATIONS

All AMoD wallpapers have achieved the following fire and flammability classifications:

North America:

Class A – ASTM E84-15a / UL 723 / ANSI/NFPA No. 255 / UBC No. 8-1

Recognised in the National Fire Protection Association (NFPA 101) and International Building Code, Chapter 8

Australia & New Zealand:

Group 1 – AS/NZS 3837:1998

Compliant with the Building Code of Australia (BCA)

GENERAL ENQUIRIES

+61 02 9979 3100 Mon-Fri: 9am - 5pm

wallpaper@australianmuseumdesign.com.au

www.australianmuseumdesign.com.au

COMMON FEATURES

All AMoD wallpapers, regardless of substrate or print method, share the following characteristics:

Printed to order: Produced specifically for your project to ensure consistent batching and minimal waste.

Custom lengths: Rolls can be supplied to suit your wall height, reducing waste and simplifying installation.

Join types vary by design: Most wallpapers use butted joins for edge-to-edge alignment. Some large-scale artworks print across 2-roll or 3-roll sequences to maintain pattern accuracy.

Standard roll: 61.5 cm x 10m

Sustainable production: Water-based inks with no heavy metals or harmful substances. Non-woven substrates are PVC-free and derived from FSC-certified fibres.

Design flexibility: Artwork scale, colourways, or background colour can be customised on request.

ORDERING, BATCHING & DELIVERY

Samples: Supplied for design and material reference. Not colour-accurate due to variations in print runs.

Batching: All wallpaper is printed in matching batches. Please order sufficient quantity at once to avoid mismatch between different runs.

Lead Times: Standard production time is 2–4 weeks. Customised orders may take longer.

Packaging: Rolled and packed securely for transport.

Installation: We recommend professional installation for best results. Installation guides are available on request.